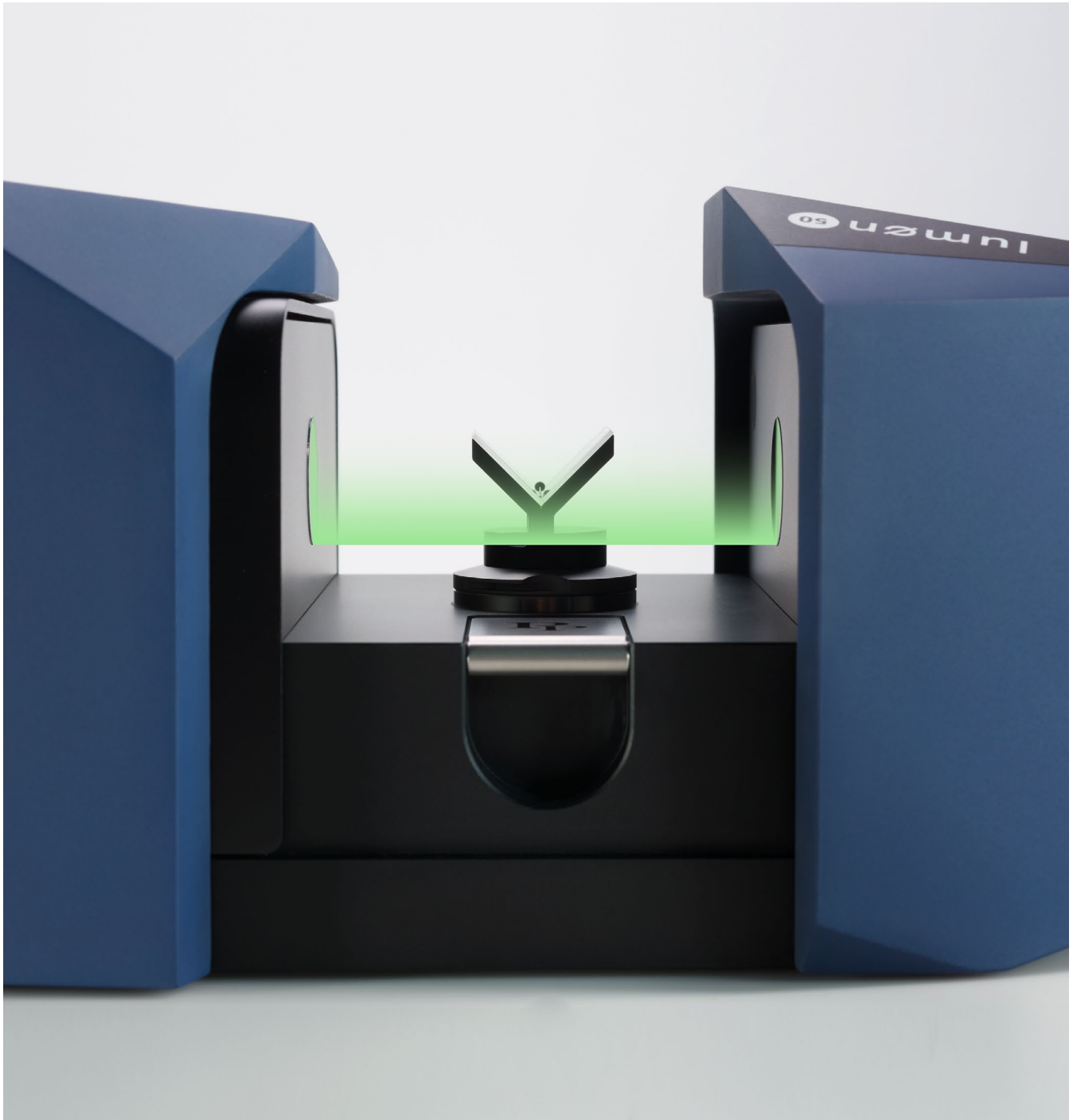


# lumen

The solution for optical measurement in demanding environments





## Designed for use on YOUR production floor

### BENEFITS

Designed for use close to your machines

Instant part detection and measurement

Intelligent analysis of fixture cleanliness prior to measurement

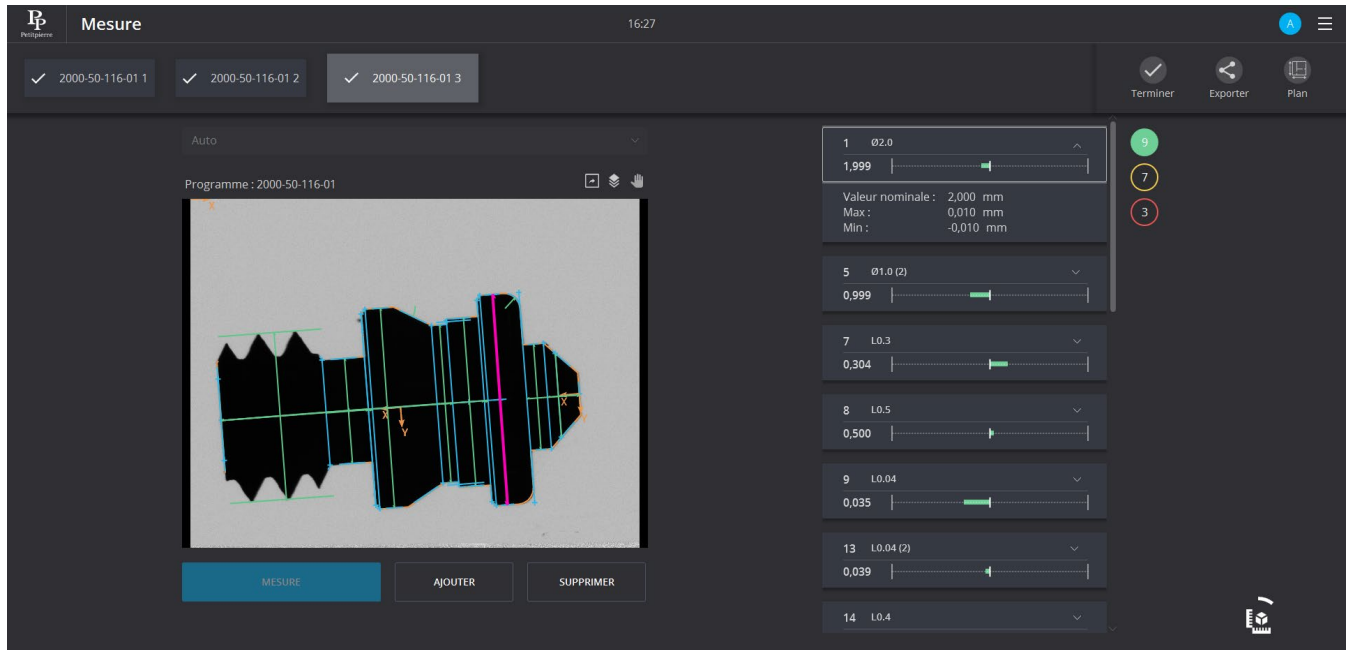
Quick and easy to clean optics and fittings

Modern, ergonomic user interface









## Intelligent, automatic and instantaneous part measurement

Streamlined measurement interface



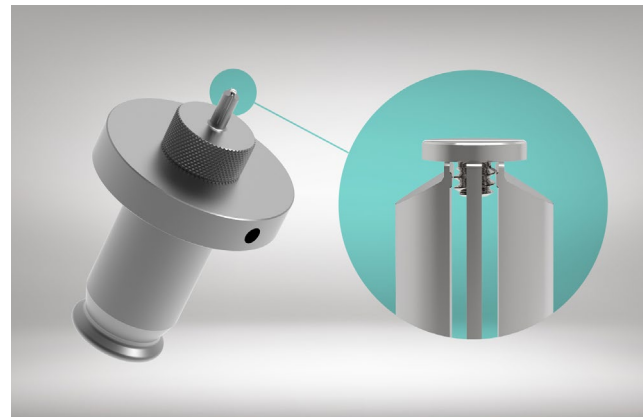
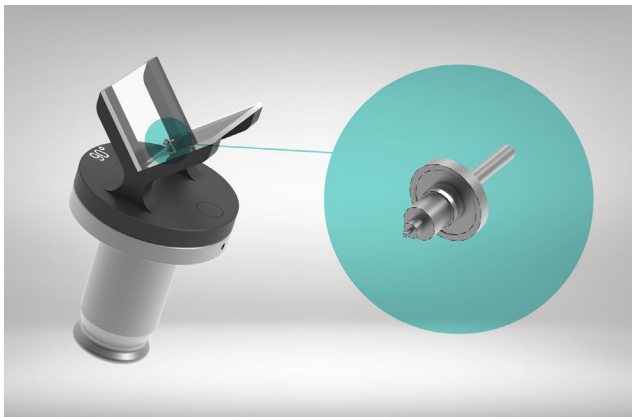
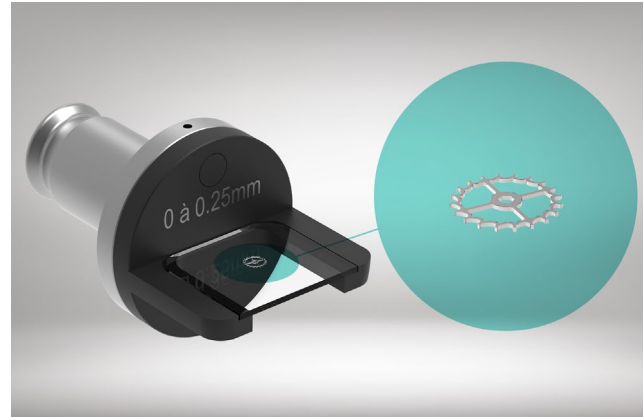
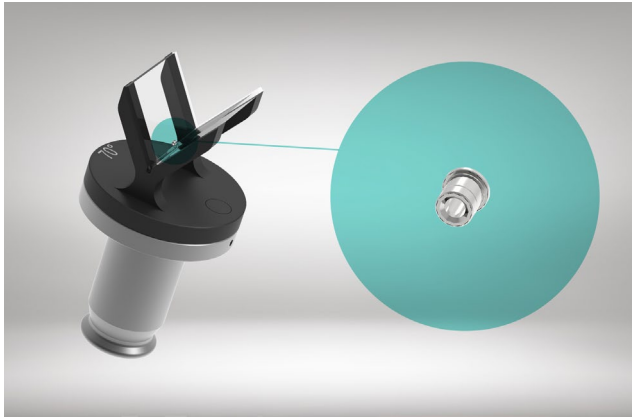
## Part types

Lumen can be deployed on your network to control :

TYPE	TYPE		
	Gauges		Screws according to NIHS
	Simple axes		Wheels
	Axes + wheels		Spiral

## Fixtures for different types of parts

Axis and plate parts



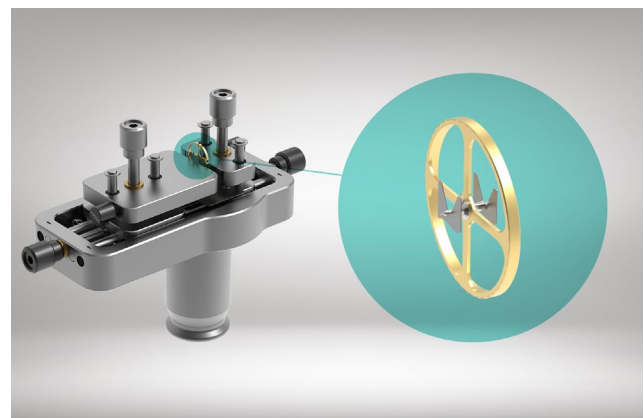
### BENEFITS

Interchangeability

Quick changeover

No tools required







Changeover without setup



## Technical data

MODEL	FIELD OF VIEW	PRECISION (DIAMETERS)	REPEATABILITY ( $\pm 2\sigma$ )	DISPLAY RESOLUTION
<b>lumø<sub>n</sub> 50</b>	15.2x12.6mm	$\pm 1.6\mu\text{m}$	1.6 $\mu\text{m}$	0.1 $\mu\text{m}$
<b>lumø<sub>n</sub> 75</b>	10.1x8.4mm	$\pm 1.2\mu\text{m}$	0.9 $\mu\text{m}$	0.1 $\mu\text{m}$
<b>lumø<sub>n</sub> 100</b>	7.6x6.3mm	$\pm 0.8\mu\text{m}$	0.5 $\mu\text{m}$	0.1 $\mu\text{m}$
<b>lumø<sub>n</sub> 150</b>	5.0x4.2mm	$\pm 0.6\mu\text{m}$	0.4 $\mu\text{m}$	0.1 $\mu\text{m}$
<b>lumø<sub>n</sub> 200</b>	3.8x3.1mm	$\pm 0.6\mu\text{m}$	0.3 $\mu\text{m}$	0.1 $\mu\text{m}$

## Items to be ordered separately

DESIGNATION	DESIGNATION
 <p><b>90° V-shaped vertical fixture</b> V-shaped positioning for décolleté axis</p>	 <p><b>Two-slat fixture</b></p>
 <p><b>70° V-shaped vertical fixture</b> V-shaped positioning for very small décolleté axes</p>	 <p><b>Fixture on request</b> Fixtures to suit your parts</p>
 <p><b>Horizontal fixture</b></p>	 <p><b>24" PC</b> 24" all-in-One touch PC</p>